

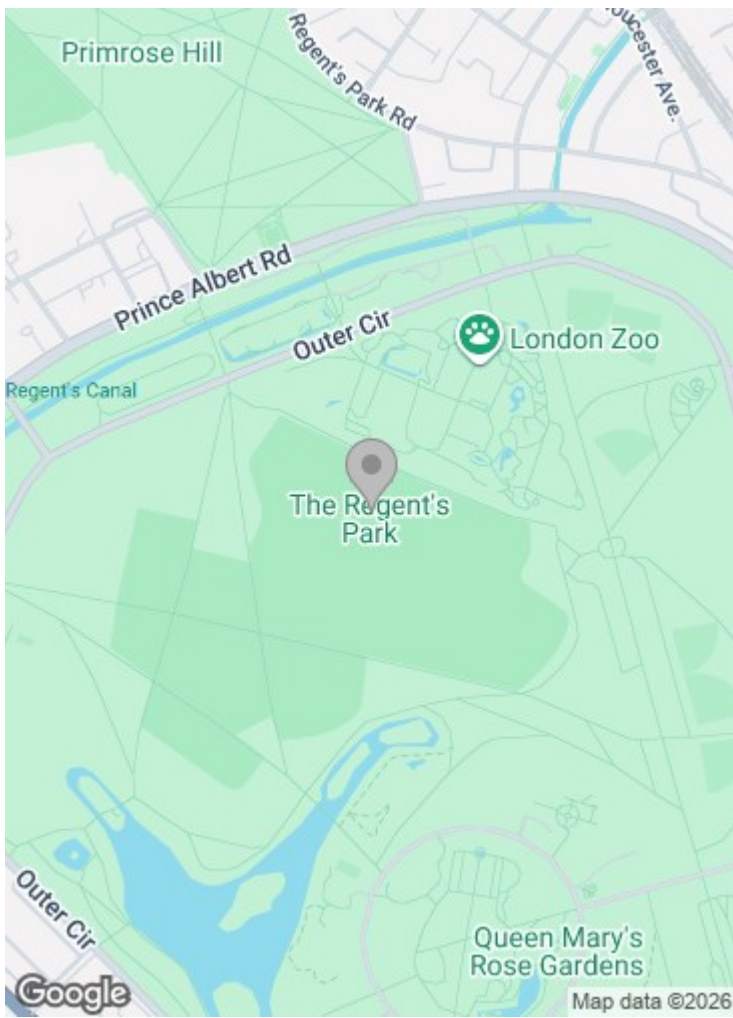


**Park Square East
Regent's Park NW1 4LH**

£5,000 per week

A wonderful, classic Nash terraced house providing a gracious, centrally located home directly overlooking private communal gardens, adjacent to Regent's Park. The house provides 4,450 square feet of accommodation set over five floors and features high ceilinged reception rooms with tall windows in addition to well-proportioned bedrooms.

Park Square East is located within moments of Regent's Park. The nearest tube stations are Regents Park (Bakerloo line) and Great Portland Street (Hammersmith & City, Circle and Metropolitan lines), both within 300 yards. The amenities of Marylebone and the West End's extensive shopping, entertainment and leisure facilities are within easy walking distance.

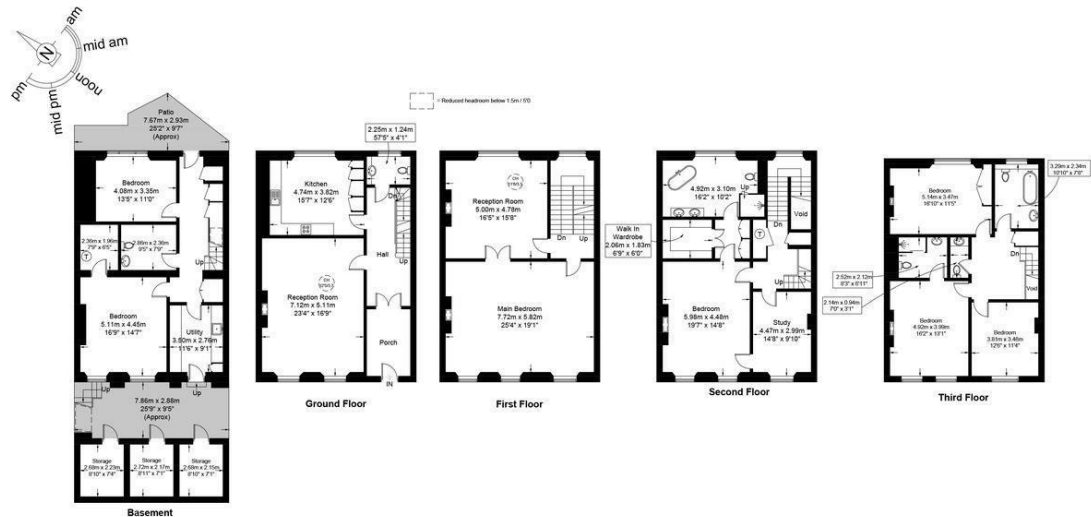


Park Square East ,NW1

Approximate Gross Internal Area = 4450 sq ft / 413.4 sq m

Restricted Height = 17 sq ft / 1.6 sq m

Steerages = 200 sq ft / 18.6 sq m



PRIME PERSPECTIVES

This plan is for layout guidance only and is not drawn to scale unless stated. All dimensions, including windows, doors, and the Total Gross Internal Area (GIA), are approximate. For precise measurements, please consult a qualified architect or surveyor before making any decisions based on this plan.

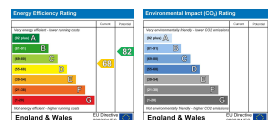


Important notice: These particulars are issued for guidance only. They are intended to give a fair overall description of the property and do not constitute a warranty of any kind or to be an offer or contract in whole or in part. Nothing in these particular shall be deemed to constitute a representation that the property is in good structural condition nor that any services, appliances, equipment or facilities are in good working order. Notwithstanding that all information contained in these particulars, both in the text and in any plans and photographs is given in good faith, intending purchasers should make their own enquiries as to the accuracy of all matters upon which they intend to rely. Measurements are given for guidance only.

85 - 87 BAYHAM STREET
LONDON NW1 0AG

45 CIRCUS ROAD
LONDON NW8 9JH

T: +44 0207 1234 152
info@phillipsharrod.com



Company number 09255204 Registered in England